

PRODUCT BROCHURE

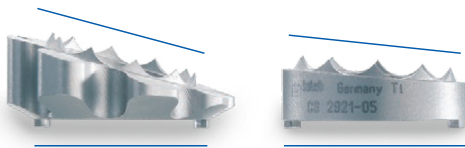
obelisc[®]

Vertebral Body Replacement

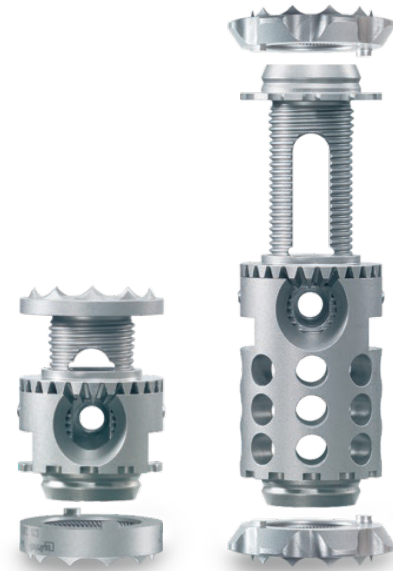


System

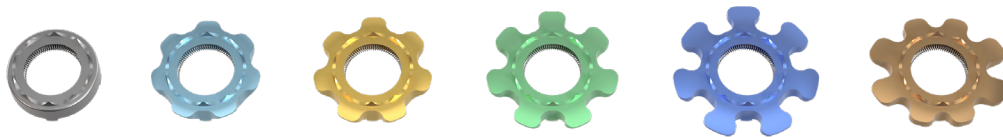
- Expandable vertebral body replacement for bridging spinal defects
- Thoracic, lumbar
- Expandable in situ up to 132mm in height
- External diameter of center piece 20mm
- End caps designed with small teeth (1.5mm height) to minimize migration and protect against dislocation
- Titanium alloy material



Multiple angled end cap options
(0-20°)



Consisting of a center piece and one or two end caps
(17-23mm center piece has fixed end caps)



Differently sized and color coded end caps
(20-32mm diameters)

Indications

Vertebral body replacement is intended for use during open surgical procedures in the thoracolumbar spine (T1-L5) to replace a collapsed, damaged, or unstable vertebral body due to tumor or trauma (e.g., fracture).

The obelisc vertebral body replacement is intended to be used with supplemental internal spinal fixation systems that have been labeled for use in the thoracic and lumbar spine (i.e., posterior pedicle screw and rod systems, anterior plate systems, and anterior screw and rod systems). The use of bone grafting material with the obelisc vertebral body replacement is optional.



Advantages

Large range of height adjustment

- Low profile distractor
- Continuous expansion in situ
- Flexible height adjustment

Large selection of end caps

- Minimizes subsidence (20-32mm diameters)
- Variety of sizes for a wide range of patient anatomies

Universal

- Multiple surgical approach options (posterior, anterior, lateral)
- Variable implant placement
- Versatile implant range

Time-saving

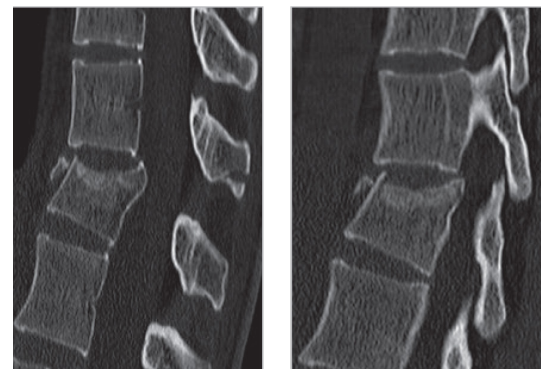
- Simple and fast
- Easy to adjust, remove and change implant during surgery



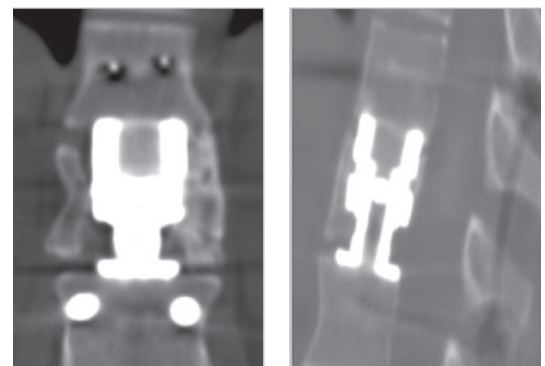
Beveled gear driven design



Large size range
17-132mm heights



Female, 36 yrs, fracture TH12



14 months post op, instrumentation obelisc

Components

Implant	Height	Angle	Product Number
obelisc locking screw	-	-	CS 2901
obelisc center piece, Ø 20mm	17-23mm	-	CS 2920-17
obelisc center piece, Ø 20mm	20-28mm	-	CS 2920-20
obelisc center piece, Ø 20mm	23-31mm	-	CS 2920-23
obelisc center piece, Ø 20mm	27-38mm	-	CS 2920-27
obelisc center piece, Ø 20mm	32-47mm	-	CS 2920-32
obelisc center piece, Ø 20mm	40-62mm	-	CS 2920-40
obelisc center piece, Ø 20mm	53-87mm	-	CS 2920-53
obelisc center piece, Ø 20mm	76-132mm	-	CS 2920-76
obelisc end cap, Ø 20mm - gray	-	0°	CS 2925-00
obelisc end cap, Ø 20mm - gray	-	5°	CS 2925-05
obelisc end cap, Ø 20mm - gray	-	10°	CS 2925-10
obelisc end cap, Ø 20mm - gray	-	15°	CS 2925-15
obelisc end cap, Ø 24mm - light blue	-	0°	CS 2926-00
obelisc end cap, Ø 24mm - light blue	-	5°	CS 2926-05
obelisc end cap, Ø 24mm - light blue	-	10°	CS 2926-10
obelisc end cap, Ø 24mm - light blue	-	15°	CS 2926-15
obelisc end cap, Ø 26mm - yellow	-	0°	CS 2927-00
obelisc end cap, Ø 26mm - yellow	-	5°	CS 2927-05
obelisc end cap, Ø 26mm - yellow	-	10°	CS 2927-10
obelisc end cap, Ø 26mm - yellow	-	15°	CS 2927-15
obelisc end cap, Ø 29mm - green	-	0°	CS 2928-00
obelisc end cap, Ø 29mm - green	-	5°	CS 2928-05
obelisc end cap, Ø 29mm - green	-	10°	CS 2928-10
obelisc end cap, Ø 29mm - green	-	15°	CS 2928-15
obelisc end cap, Ø 32mm - blue	-	0°	CS 2929-00
obelisc end cap, Ø 32mm - blue	-	5°	CS 2929-05
obelisc end cap, Ø 32mm - blue	-	10°	CS 2929-10
obelisc end cap, Ø 32mm - blue	-	15°	CS 2929-15
obelisc end cap, oval 32mm x 26mm - bronze	-	0°	CS 2930-00
obelisc end cap, oval 32mm x 26mm - bronze	-	5°	CS 2930-05
obelisc end cap, oval 32mm x 26mm - bronze	-	10°	CS 2930-10
obelisc end cap, oval 32mm x 26mm - bronze	-	15°	CS 2930-15
obelisc end cap, oval 32mm x 26mm - bronze	-	20°	CS 2930-20