

Components

Implants	Expansion Range	Angulation	Product Number
Small VBR, Ø 12mm	10–13mm	0°	CS 2250-12-10
	12–17mm	0°	CS 2250-12-12
	16–25mm	0°	CS 2250-12-16
	16–25mm	6°	CS 2250-12-16-6
	24–40mm	0°	CS 2250-12-24
	24–40mm	6°	CS 2250-12-24-6
	39–65mm	0°	CS 2250-12-39
	39–65mm	6°	CS 2250-12-39-6
Small VBR, Ø 14mm	10–13mm	0°	CS 2250-14-10
	12–17mm	0°	CS 2250-14-12
	16–25mm	0°	CS 2250-14-16
	16–25mm	6°	CS 2250-14-16-6
	24–40mm	0°	CS 2250-14-24
	24–40mm	6°	CS 2250-14-24-6
	39–65mm	0°	CS 2250-14-39
	39–65mm	6°	CS 2250-14-39-6
Small VBR, Ø 16mm	10–13mm	0°	CS 2250-16-10
	12–17mm	0°	CS 2250-16-12
	16–25mm	0°	CS 2250-16-16
	16–25mm	6°	CS 2250-16-16-6
	24–40mm	0°	CS 2250-16-24
	24–40mm	6°	CS 2250-16-24-6
Locking screw	39–65mm	0°	CS 2250-16-39
			CS 2259

Instruments	Product Number
Manual expansion instrument	CS 2252
Inserter for small heights	CS 2255-1
Inserter for large heights (larger than 16mm)	CS 2255-2
2.5mm Hex screwdriver	CS 2261
Measuring template for Small VBR	CS 2266-3
Impactor	CS 2274-2
Measuring caliper	CS 5788
Straight expander/inserter	
Blue handle	CS 2256-01
Assist handle	CS 2256-02
12mm Cassette head	CS 2256-12
14mm Cassette head	CS 2256-14
16mm Cassette head	CS 2256-16
Outer shaft	CS 2256-20
Inner shaft	CS 2256-21
Implant releasing rod	CS 2256-22
Lollipop trials	
12–14mm	CS 2265-1
16–20mm	CS 2265-2

100 years

Over A Century Of Innovation



18221 Edison Avenue, Chesterfield, MO 63005
 Phone: 866.519.0268 | Fax: 636.519.0271
 www.ulrichmedicalusa.com
 IFU: www.ifu.ulrichmedical.com



World Headquarters
 ulrich medical®
 Buchbrunnenweg 12
 89081 Ulm, Germany

US0205 R6 / 2016-11



Small VBR[®]

vertebral body replacement

100 Years

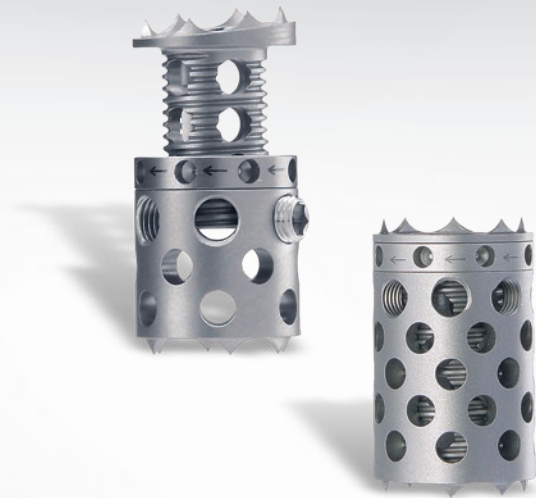
Over A Century Of Innovation



Ulrich
medical USA

System

The vertebral body replacement (VBR) is used for the surgical reconstruction of defects of the thoracic and lumbar spine (T1 to L5). With only a few basic instruments, a wide range of implants can be used to match patient anatomy and restore height and sagittal balance for spinal correction.



Diameter Expansion Range

12mm	10 - 65mm
14mm	10 - 65mm
16mm	10 - 65mm

Angle Options

0°, 6°

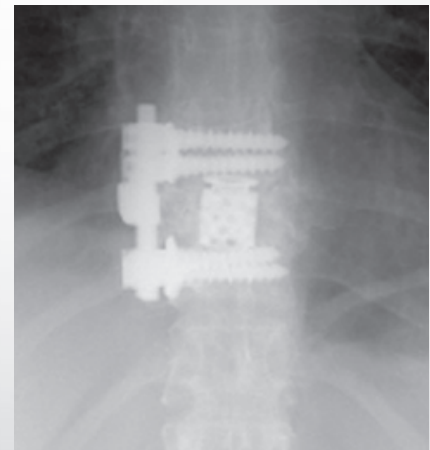


Indications

The Small VBR is a vertebral body replacement device intended for use in the thoracic and lumbar spine (T1-L5) to replace a collapsed, damaged, or unstable vertebral body due to tumor or trauma (i.e., fracture).

The Small VBR is intended to be used with supplemental internal spinal fixation systems that are cleared by the FDA for use in the thoracic and lumbar spine. Such systems include posterior pedicle screw and rod systems, anterior plate systems, and anterior screw and rod systems.

The use of bone grafting material with the Small VBR is optional.



T8-T10 anterior stabilization with Small VBR

Department of Neurosurgery,
Washington University,
St. Louis, Missouri

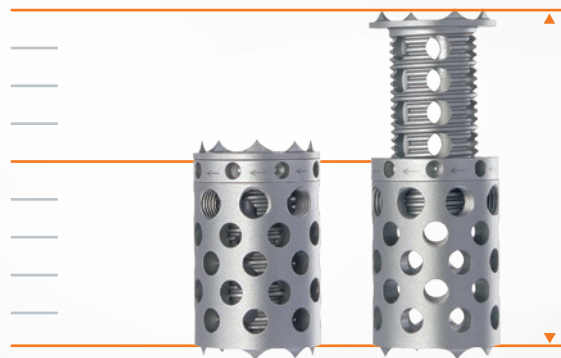
Advantages

The Small VBR may be continuously expanded in situ, allowing for easy placement and bridging of the defect. The implant is anchored safely between the adjacent vertebral bodies.

The contact areas are large and fixed with spikes to safely engage the vertebral end plates and anchor the implant.

All implants may be filled with bone graft before and after insertion. Additional application of bone graft outside the implant may enhance the fusion mass.

- Easy, gear driven expansion
- Adjustable to match anatomy
- Simple, limited instrumentation
- Three diameters, two angles
- Fillable with bone graft or substitute
- Disposable, single-use cassette heads
- Titanium alloy



Easy-to-use distractor

